

**ROHINI COLLEGE OF ENGINEERING
AND TECHNOLOGY,
PALKULAM**



*Department of Electrical and Electronics
Engineering*

Training and Placement Certification Course

TRP 1401

REASONING SKILL

Course Instructor

Dr. N. AMUTHA PRIYA, ME., MBA., Ph.D.,

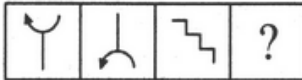
Assistant Professor

Department of Electrical and Electronics Engineering

NON-VERBAL REASONING

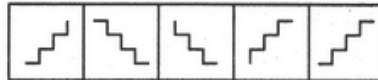
1. Select a suitable figure from the Answer Figures that would replace the question mark (?).

Problem Figures:



(A) (B) (C) (D)

Answer Figures:



(1) (2) (3) (4) (5)

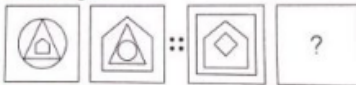
- A. 1
- B. 2
- C. 3
- D. 4

Explanation:

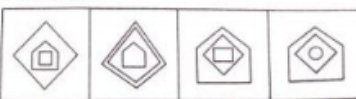
The figure gets vertically inverted.

2. The second figure in the first part of the problem figures bears a certain relationship to the first figure. Similarly, one of the figures of answer figures bears the same relationship to the first figure of the second part. Choose a right figure from the set of answer figures which would replace the question mark (?)

Problem Figures



Answer Figures



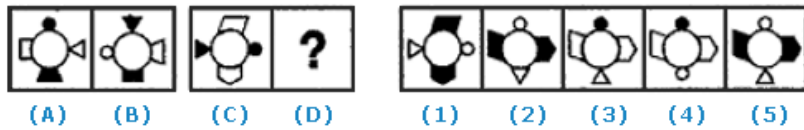
(A) (B) (C) (D)

- A. A
- B. C
- C. B
- D. D

Explanation:

From problem figure, the innermost figure becomes outer most figure and the outer most figure becomes the innermost figure i.e., first and third figure interchanged

5. Select a suitable figure from the Answer Figures that would replace the question mark (?).



- A. 1
- B. 3
- C. 2
- D. 5

Explanation:

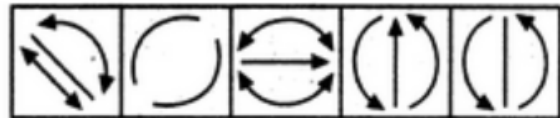
The fig. rotates 90 ACW and the white symbols turn black while the black symbols turn white.

10. Select a suitable figure from the Answer Figures that would replace the question mark (?).

Problem Figures:



Answer Figures:



- A. 1
- B. 2
- C. 3
- D. 4

Explanation: All the arrows reverse their directions.

STATEMENTS AND ASSUMPTIONS

1. Statement : Savita made an application to the bank for a loan of Rs 180000 by mortgaging his house to the bank and promised to repay it in 5 years.

Assumptions:

I. The bank has a practice of granting loans for Rs. 100000 and above.

II. The bank accepts house as collateral security against such loans.

- A. Only assumption I is implicit
- B. Only assumption II is implicit
- C. Either I or II is implicit
- D. Neither I nor II is implicit
- E. Both I and II are implicit

2. Statement: Sachin wrote to his brother at Bangalore to collect personally the application form the University for the Post-graduation Course in Mathematics.

Assumptions:

1. The University may issue application forms to a person other than the prospective student.

2. Sachin's brother may receive the letter well before the last date of collecting application forms.

- A. Only assumption I is implicit
- B. Only assumption II is implicit
- C. Either I or II is implicit
- D. Neither I nor II is implicit
- E. Both I and II are implicit

3. Statement: Unemployment allowance should be given to all unemployed Indian youth above 18 years of age.

Assumptions:

There are unemployed youth in India who needs monetary support.

The government has sufficient funds to provide allowance to all unemployed youth.

- A. Only assumption I is implicit
- B. Only assumption II is implicit
- C. Either I or II is implicit
- D. Neither I nor II is implicit

4. Statement: Anger is energy, in a more proactive way and how to channellise it is in itself a skill.

Assumptions: I. Anger need to be channelized.

II. Only skilful people can channellise anger to energy.

- A. If only assumption I is implicit.
- B. If only assumption II is implicit.
- C. if either I or II is implicit.
- D. if neither I or II is implicit.

5. Statement: The education of a student at collegiate level, not taking into account maintenance expenses, costs four hundred rupees a year. Collegiate education is thus drawing heavily upon the national resources of an impoverished community. So college education should be restricted to a brilliant few.

Assumptions:

I. Our resources are very limited.

II. Only a few students should be admitted to the colleges.

- A. Only assumption I is implicit
- B. Only assumption II is implicit
- C. Either I or II is implicit
- D. Neither I nor II is implicit
- E. Both I and II are implicit

ASSERTION AND REASON

1. Assertion (A): The Steam engine was invented by James Watt.

Reason (R): There was a problem of taking out water from flooded mines.

- A. Both A and R are true and R is the correct explanation of A.
- B. Both A and R are true but R is NOT the correct explanation of A.
- C. A is true but R is false.
- D. A is false but R is true.

2. Assertion (A): When lightning strikes, the sound is heard a little after the flash is seen.

Reason (R): The velocity of light is greater than that of the sound.

- A. Both A and R are true and R is the correct explanation of A.
- B. Both A and R are true but R is not the correct explanation of A.
- C. A is true but R is false.
- D. A is false but R is true.

3. Assertion (A) : Diamond is used for cutting glass.

Reason (R) : Diamond has a high refractive index.

- A. Both A and R are true and R is the correct explanation of A.
- B. Both A and R are true but R is NOT the correct explanation of A.
- C. A is true but R is false.
- D. A is false but R is true.

4. Assertion (A) : Bangladesh imports jute from India.

Reason (R) : Bangladesh has most of the jute mills.

- A. Both A and R are true and R is the correct explanation of A.
- B. Both A and R are true but R is NOT the correct explanation of A.
- C. A is true but R is false.
- D. A is false but R is true.
- E. Both A and R are false.

5. Assertion (A) : Nuclear fusion is used to generate electricity.

Reason (R) : Nuclear power is not used because it cannot be controlled.

- A. Both A and R are true and R is the correct explanation of A
- B. Both A and R are true but R is NOT the correct explanation of A
- C. A is true but R is false
- D. Both A and R are false